

User Notice

G1 Facepiece Exhalation Valve Stem

December 13, 2017

MSA Corporate Center
1000 Cranberry Woods Drive
Cranberry Township, PA 16066
800.MSA.2222
www.MSAafety.com

Dear MSA Customer,

This User Notice is issued to inform you that MSA received field reports from end users regarding the exhalation valve stem in the G1 Facepiece and that, as a result of MSA's findings related to these reports, you must take the actions outlined in this User Notice.

The Exhalation Valve Stem in the G1 Facepiece

The G1 Facepiece exhalation valve features a two-piece design comprised of a valve seat and a valve stem. The valve stem is manufactured with a notch in one end that creates a secure connection with the valve seat when the notched end is inserted. Reference Figure 1.

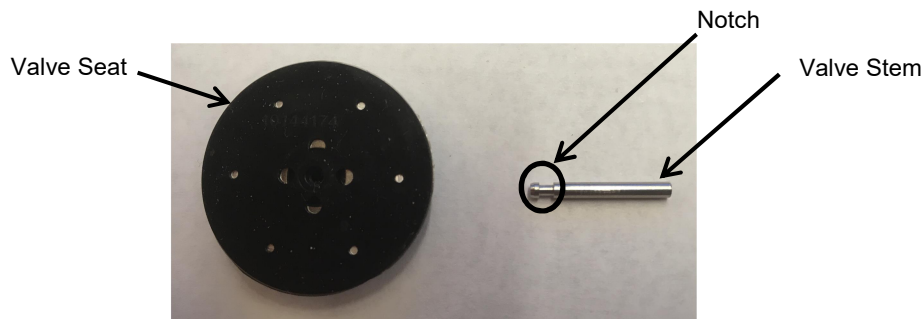


Figure 1

Field Reports

MSA received a limited number of field reports from end users indicating that the valve stem separated from the valve seat.

The notched end of the exhalation valve stem MUST be inserted into the valve seat, or the valve stem may separate from the valve seat.

If the valve stem separates from the valve seat, the valve seat may become "unseated" in the G1 Facepiece's inhalation assembly. This may result in ambient environmental air entering the G1 Facepiece during normal use.

MSA is advising all G1 Facepiece customers to perform the inspection procedure described below upon receiving this notification to ensure that the notched end of the valve stem is inserted into the valve seat.

NOTE: Perform a negative pressure check on the G1 Facepiece prior to each use, as required by the instruction manual. If the valve stem has separated from the valve seat and is no longer appropriately seated in the inhalation assembly of the G1 Facepiece, the negative pressure test will not be successful.

Identifying and Addressing Affected G1 Exhalation Valves

Reference Attachment 1 for the part numbers associated with G1 Facepieces. For each G1 Facepiece in your possession, use the G1 Facepiece – Exhalation Valve Replacement Procedure (the Procedure), attached as Attachment 2 to this User Notice, to complete steps 1) – 3) outlined below.

- 1) Access the exhalation valve by following steps 1 through 6 in the Procedure. See Attachment 2.
- 2) Remove the exhalation valve per step 7 in the Procedure, but do not discard it. See Attachment 2
- 3) Examine the exhalation valve.
 - a. If the valve seat is damaged (reference Figure 2), discard the exhalation valve and follow steps 8 through 17 in the Procedure to install a new exhalation valve. See Attachment 2.

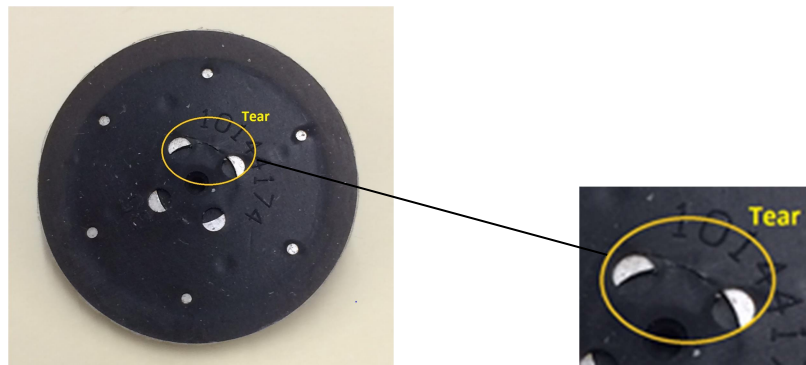


Figure 2

- b. If the smooth end of the valve stem is inserted in the valve seat, the notched end of the valve stem will be visible as in Figure 3.

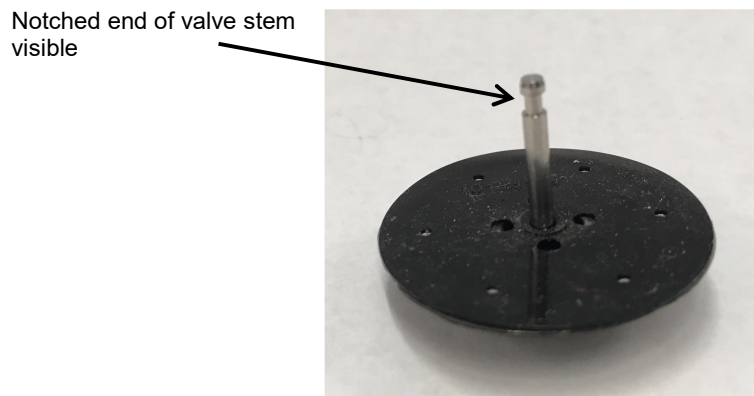


Figure 3

If the smooth end of the valve stem is inserted in the valve seat, perform the following steps:

- i. Grasp the top center of the valve seat with one hand and grasp the valve stem with the other hand
 - ii. Slowly pull the valve stem away from the valve seat until it separates
 - iii. Carefully insert the notched end of the valve stem into the valve seat by hand until it bottoms out
 - iv. Use care not to damage the valve seat during removal and insertion of the valve stem
 - v. Follow steps 8 through 17 of the Procedure to re-install the exhalation valve. See Attachment 2.
- c. If the notched end of the valve stem is not visible (reference Figure 4), follow steps 8 through 17 of the Procedure to re-install the exhalation valve. See Attachment 2.

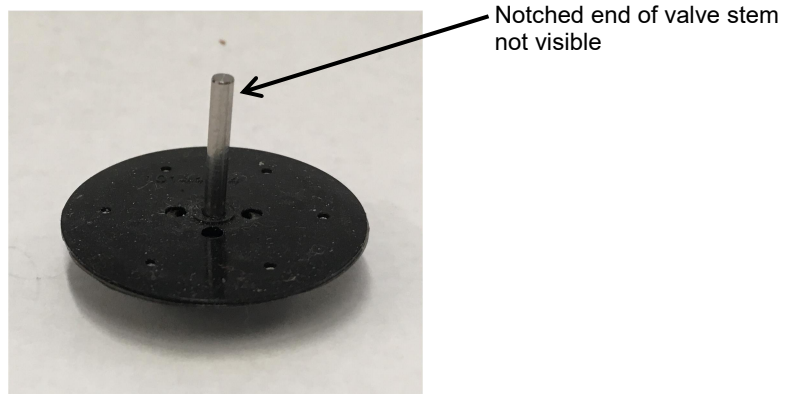


Figure 4



MSA Corporate Center
1000 Cranberry Woods Drive
Cranberry Township, PA 16066
800.MSA.2222
www.MSAafety.com

MSA Customer Service Contact Information:

If you have any questions regarding this *User Notice*, please contact MSA Customer Service as follows:

- U.S., Canada, or U.S. Territories – 1-866-672-0005 or by email at: ProductSafetyNotices@MSAafety.com.
- Outside the U.S., Canada, and U.S. Territories – 724-776-8626 or by email at: LAMZonecs@MSAnet.com.

We apologize for any inconveniences that this may cause; however, your safety and continued satisfaction with our products is important to us.

Best regards,

A handwritten signature in blue ink that reads 'Nathan Andrulonis'.

Nathan Andrulonis
Manager of Product Safety

PS17033-03



Attachment 1

G1 Facepiece Part Numbers*
10156458
10156459
10156460
10156461
10156462
10161809
10161810
10161811
10161812
10161813
10161814
10161815
10161816
10161817
10171015
10183454
10183713
10188116
10188117

MSA Corporate Center
1000 Cranberry Woods Drive
Cranberry Township, PA 16066
800.MSA.2222
www.MSAafety.com

***In addition to the part numbers above, any G1 Facepiece ordered with an ATO code starting with "A-G1FP" is affected.**

G1 Facepiece – Exhalation Valve Replacement Procedure

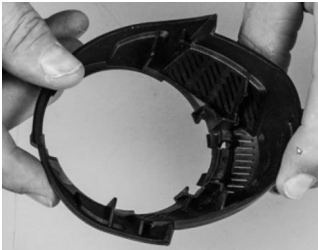
This article describes the procedure to replace the G1 Facepiece exhalation valve.

Required:

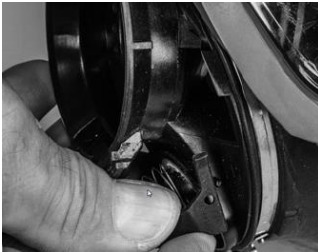
- Flat-blade screwdriver
- Wipes dampened with isopropyl alcohol or lint-free wipes
- Soft-tip, lint-free cleaning swabs (equivalent to McMaster-Carr PN 71035T61)



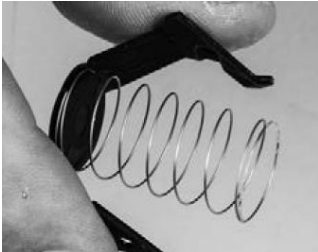
1. Insert a small flat-blade screwdriver into the tabbed slot below the lower button of the component housing.
2. Leverage the blade to push down on the locking tab until it snaps open.



3. Rotate the component housing cover off the facepiece.



4. Pull the spring retainer forks off the locking lug and out of the slot until the spring retainer releases.



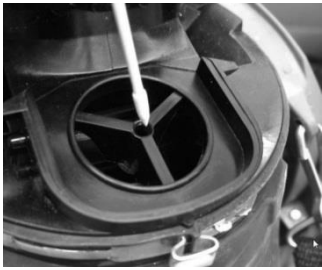
5. Pull the spring retainer away from the facepiece, and set it aside.
6. Make sure the spring is not deformed and the retainer forks are not broken. If necessary, replace the spring retainer.



7. Remove the exhalation valve from the housing assembly, and discard it.



8. Use a wipe dampened with isopropyl alcohol to clean the surfaces of the valve seat.



9. Use a lint-free swab dampened with isopropyl alcohol to clean inside the stem opening.
10. Make sure the valve seat is free of debris.
11. Allow the valve seat to dry completely.



12. Install the new exhalation valve into the component housing. Make sure the valve stem is inserted into the stem opening.



13. Install the spring retainer over the boss of the exhalation valve. Make sure the spring is seated correctly.



14. Align the retainer forks on the flat surface of the component housing, and slide the spring retainer forward until each fork snaps into position.



15. Install the top of the component housing cover over the top tab of the component housing.



16. Push on the cover to engage the locking tab until it snaps into place with an audible click.
17. Conduct a Negative Pressure Leak Test as described in the G1 SCBA operating instructions (PN 10158406).